



KBT XPol, 698-960MHz 65° 16dBi 0-10° Integrated RET (Remote Control Unit) Antenna

KB65D0709A2-16-I

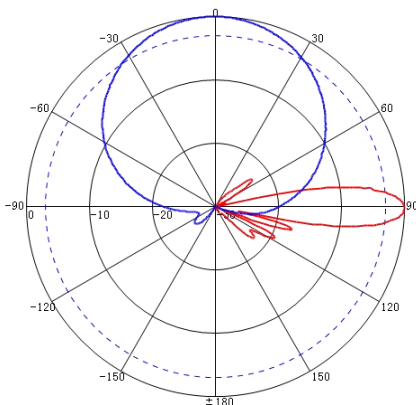
Electrical specifications

Frequency range (MHz)	698-960		
	698-824	790-896	880-960
Polarization	±45°		
Gain (dBi)	15.5	16	16.5
Electrical Downtilt (°)	0-10		
Horizontal power beam width (°)	65±3	63±3	60±3
Vertical power beam width (°)	11±1	10±1	9.5±0.5
Front-to-back ratio (dB)	≥25		
1st Upper sidelobe suppression(dB)	≥15		
Cross-polar discrimination (dB)	≥15		
Isolation (dB)	28		
Impedance (Ω)	50		
VSWR	≤1.5		
Intermodulation IM3 (dBm)	≤-107(2*43dBm carrier)		
Maximum power (W)	300(at 50°C)		
Lighting protection	DC Grounding		

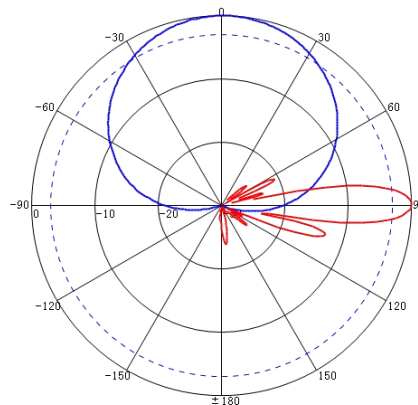
Mechanical specifications

Connector	2*4.3-10 Female
Connector position	Bottom
Height/width/depth (mm)	1980*320*140
Packing size (mm)	2210*410*265
Antenna Weight (Kg)	16.5
Bracket weight(Kg)	4
Radome material	Fiberglass/Gray
Mechanical tilt(°)	0-10
Operating temperature (°C)	-40 to +60
Rated wind velocity (km/h)	200
Suitable pole diameter (mm)	Φ50-Φ115
Mounting kit	JM-900DZA
Electrical downtilt adjustment	Integrated RET
RET model	KRCU20D

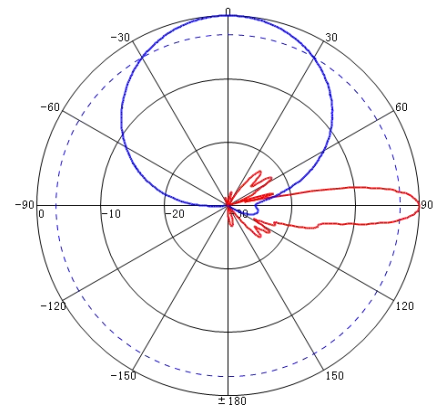
698-824MHz: ±45° Pol.

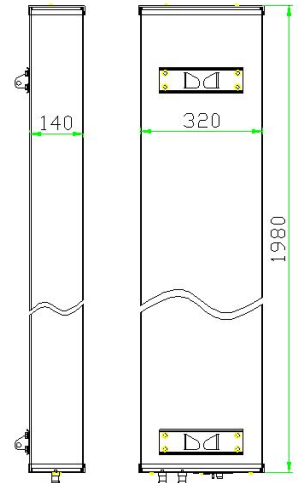
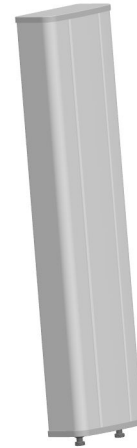


790-896MHz: ±45° Pol.



880-960MHz: ±45° Pol.



**KBT****XPoI, 698-960MHz 65° 16dBi 0-10°****Integrated RET (Remote Control Unit) Antenna****Connector Position****Outline Drawin**

Installation Sketch

